

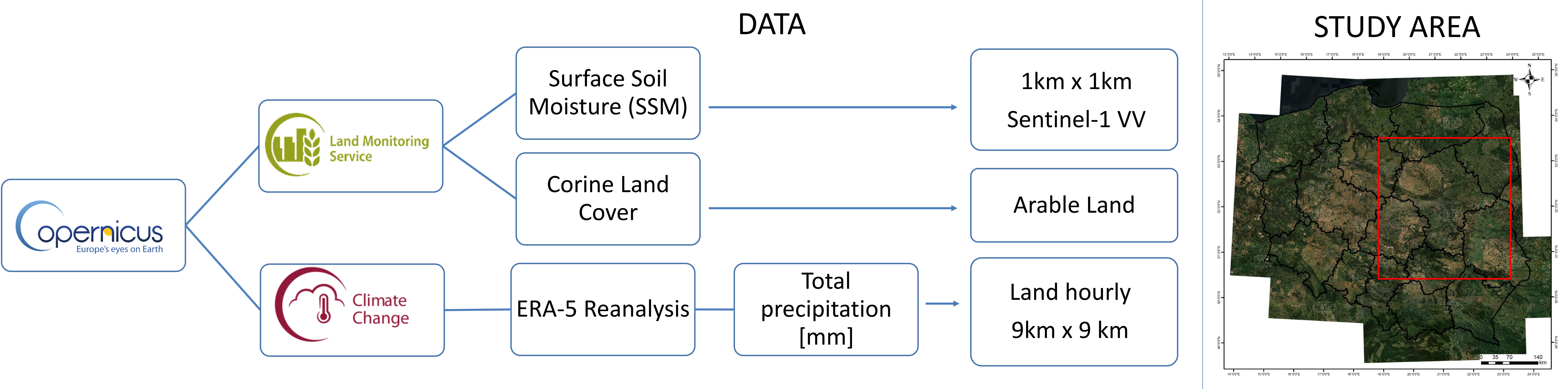
SURFACE SOIL MOISTURE (SSM) OVER THE MASOVIAN VOIVODESHIP IN POLAND

Patryk Grzybowski¹, Katarzyna Dąbrowska-Zielińska¹, Karol Paradowski¹, Magdalena Łągiewska¹, Ewa Panek¹

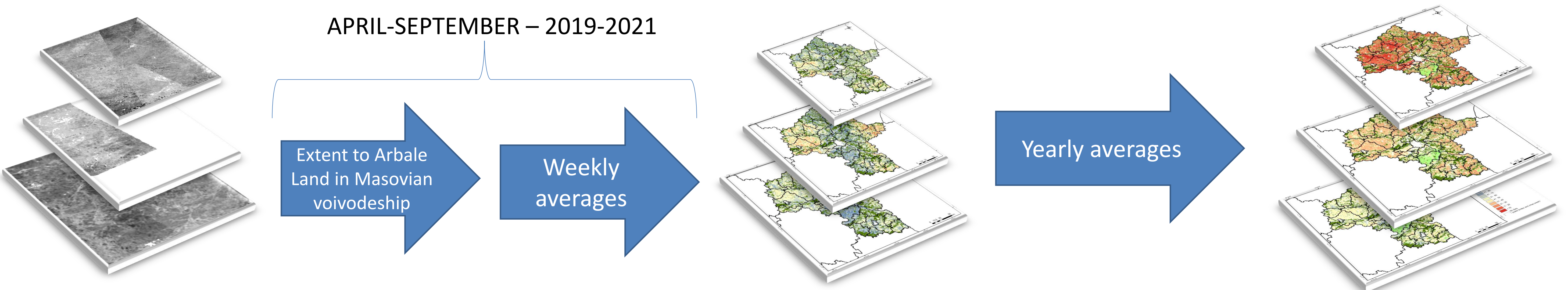
¹ Remote Sensing Centre, Institute of Geodesy and Cartography, Warsaw

THE OBJECTIVES

The aim of this study was to **provide information in the form of maps, charts, and a description of changes of soil moisture of agricultural areas, with particular emphasis on meadow areas, for the Masovian Voivodeship (NUTS2)**. For this purpose, the data of the Copernicus programme was used. Data were collected and compiled for the entire voivodeship (NUTS2) and districts (NUTS3).

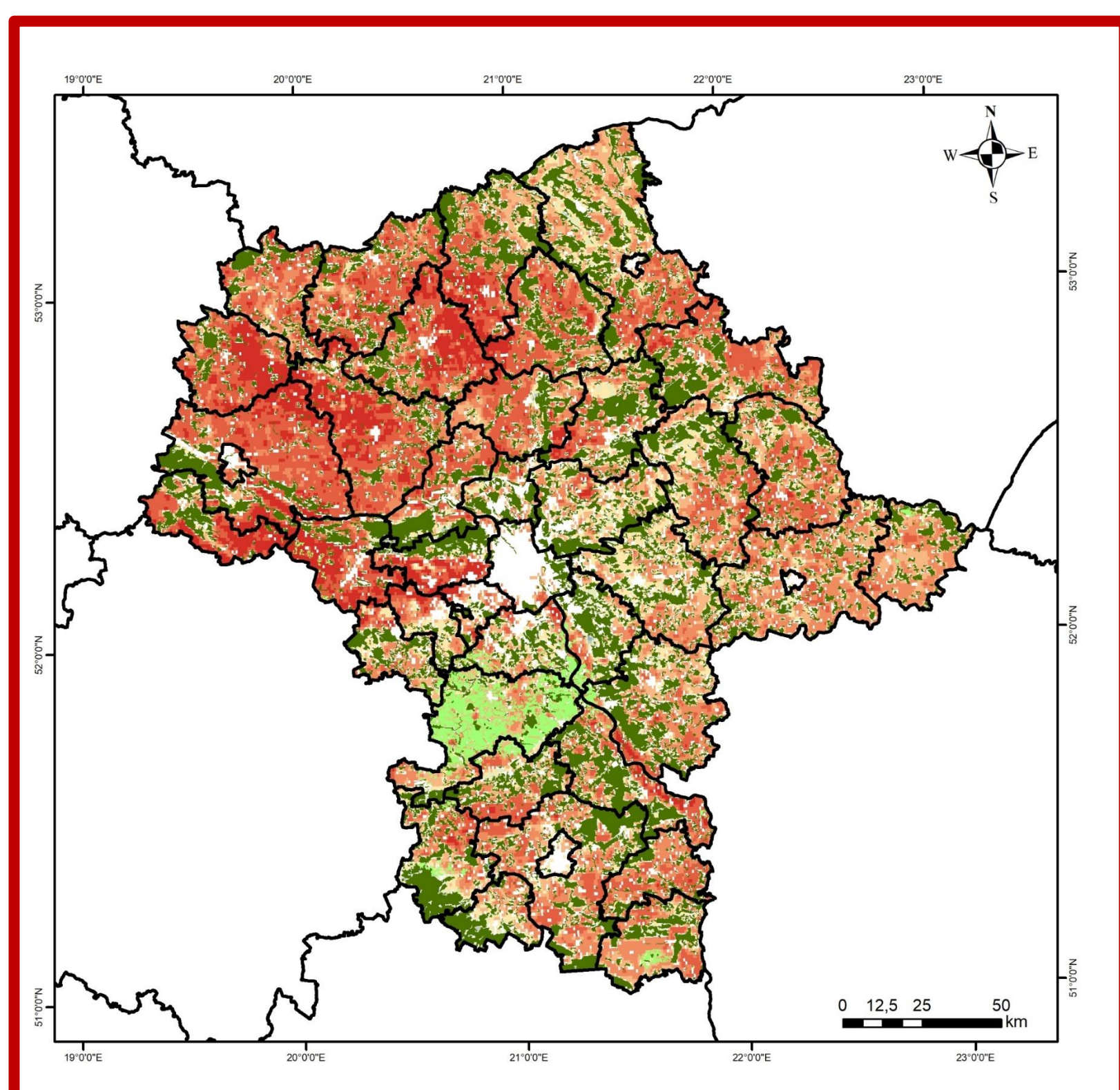


METHODOLOGY

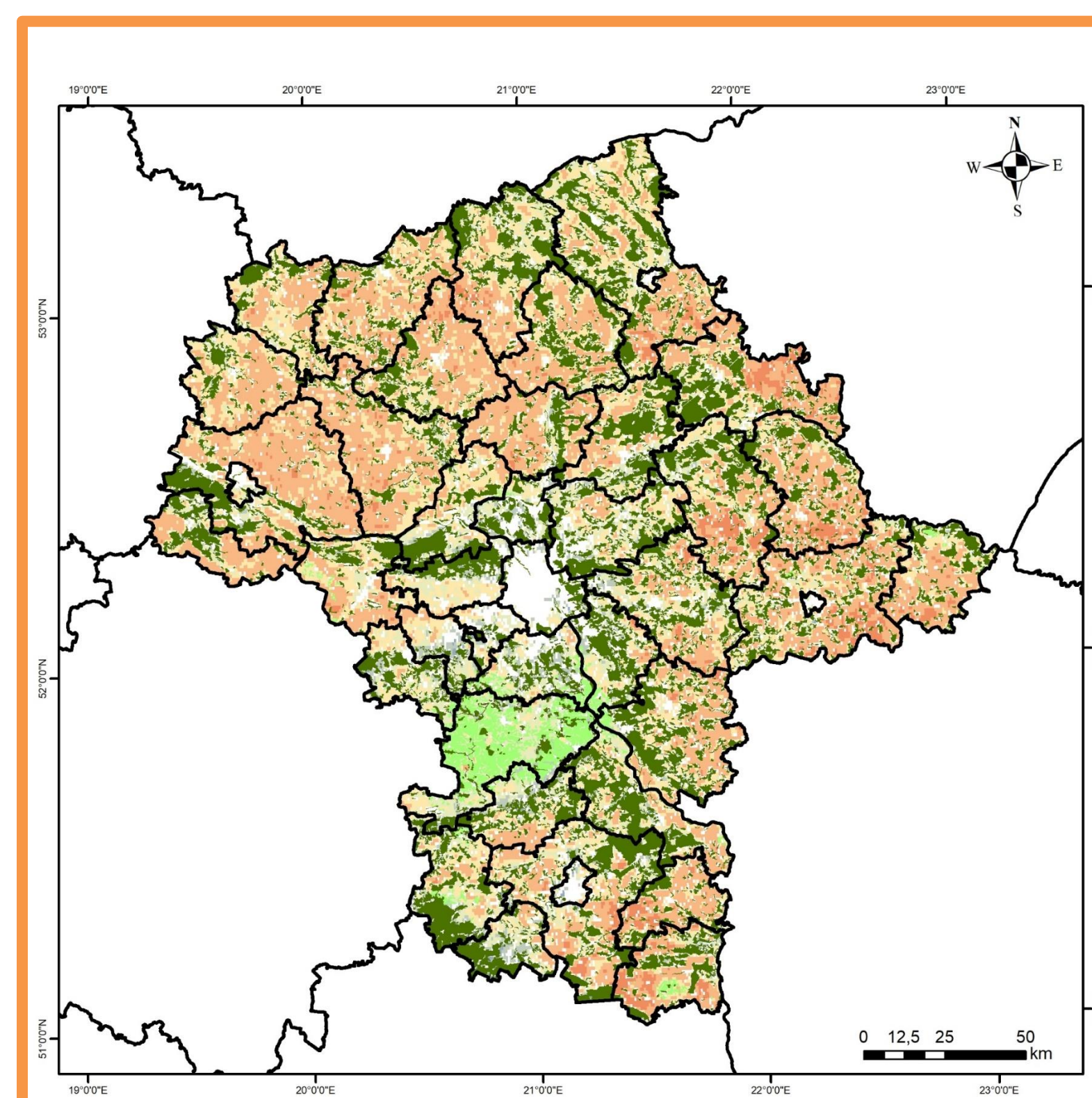


RESULTS

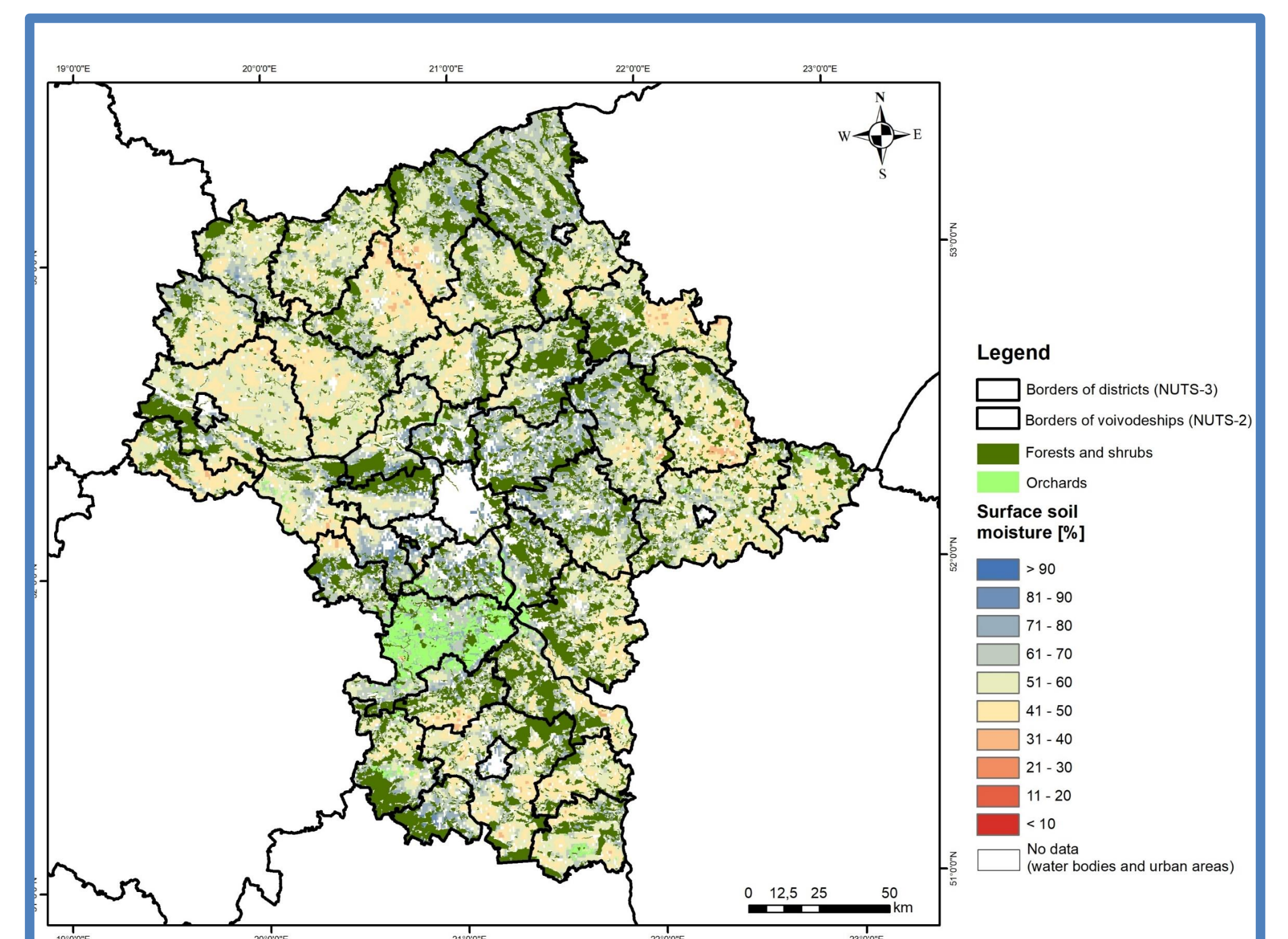
SSM [%] LAND COPERNICUS – 2019



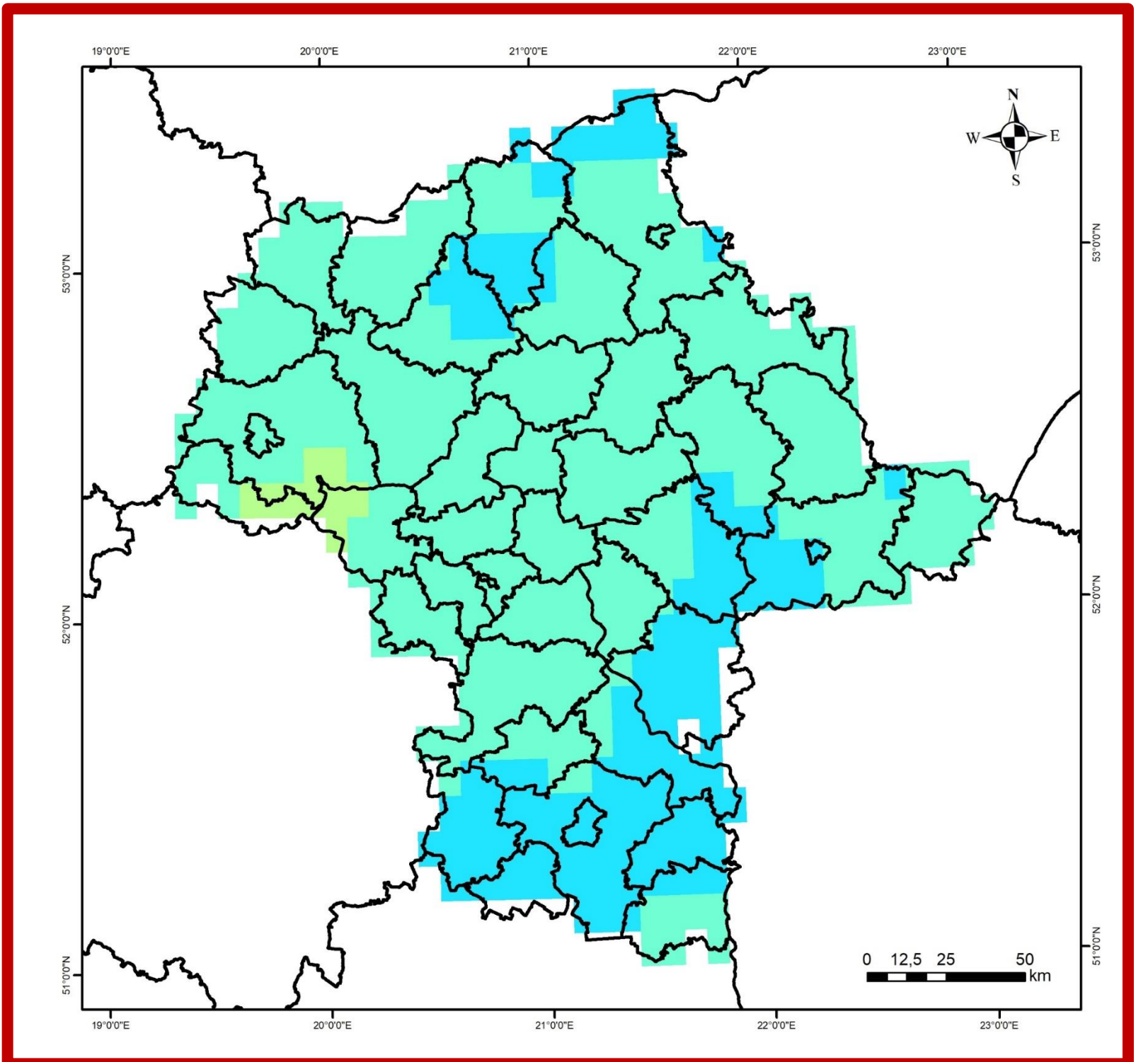
SSM [%] LAND COPERNICUS – 2020



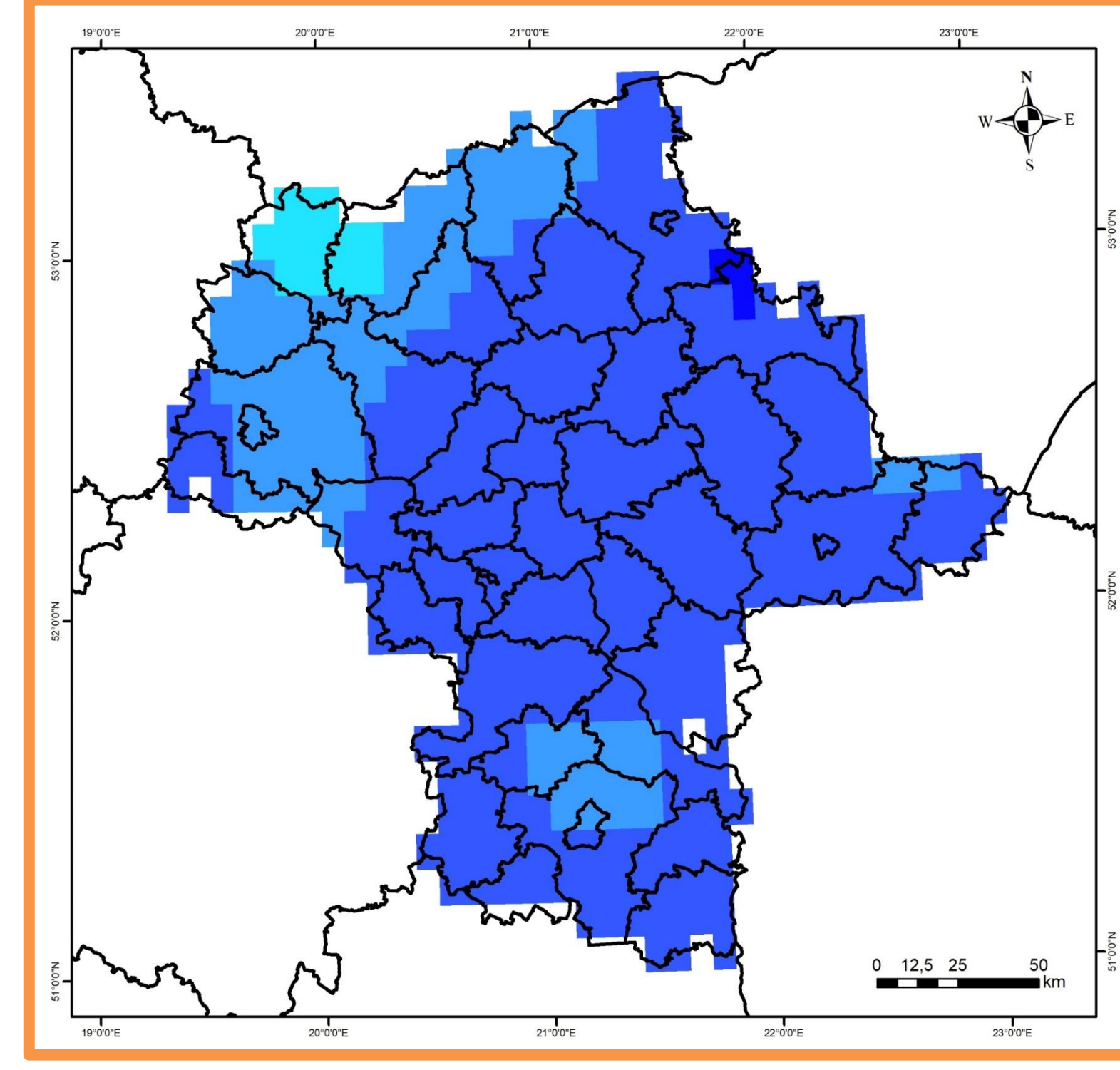
SSM [%] LAND COPERNICUS – 2021



TOTAL PRECIPITATION [MM] ERA-5 - 2019



TOTAL PRECIPITATION [MM] ERA-5 - 2020



TOTAL PRECIPITATION [MM] ERA-5 - 2021

