

# SYNERGISTIC USE OF SAR AND OPTICAL DATASETS FOR FOREST BIOMASS RETRIEVAL AND CHARACTERIZATION OF FORESTS IN TEMPERATE ZONE – A NATIONAL CASE STUDY POLAND



Hościło Agata<sup>1</sup>, Ziółkowski Dariusz<sup>1</sup>, Lewandowska Aneta<sup>1</sup>, Stereńczak Krzysztof<sup>2</sup>, Bochenek Zbigniew<sup>1</sup>, Bartold Maciej<sup>3,1</sup>

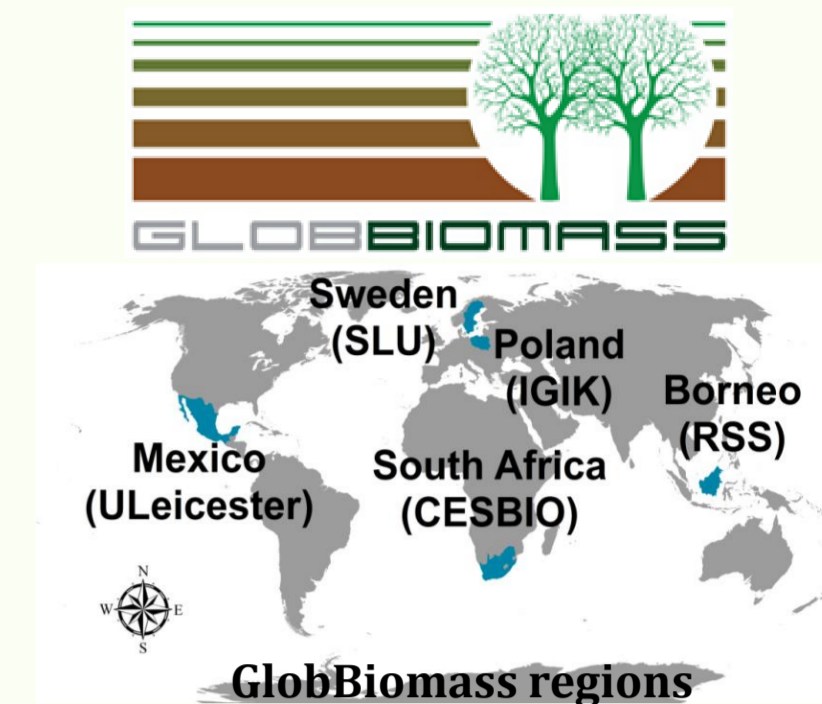


<sup>1</sup> Remote Sensing Center, Institute of Geodesy and Cartography in Warsaw, <sup>2</sup> Forest Research Institute, <sup>3</sup> University of Warsaw, Faculty of Geography and Regional Studies, Warsaw, Poland

Contact: [agata.hoscilo@igik.edu.pl](mailto:agata.hoscilo@igik.edu.pl)

## FOREST BIOMASS RETRIEVAL

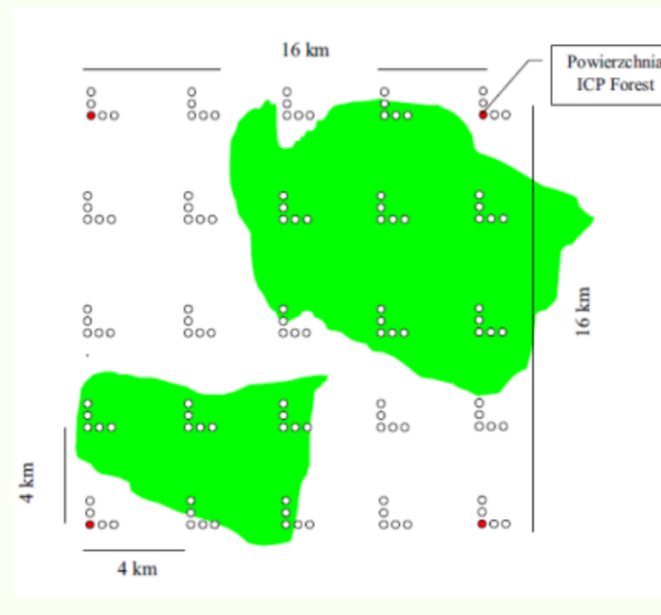
Forest above-ground woody biomass is a fundamental biophysical variable describing the amount of woody matter within a forest. Assessment of forest above-ground woody biomass (AGB) is essential for national and regional forest carbon stocks and carbon stock changes estimation and reporting. The authors present the first forest biomass map over Poland, which was obtained in the framework of the **ESA GlobBiomass** project. The main purpose of the ESA GlobBiomass project is to better characterize and to reduce uncertainties of AGB estimates by developing an innovative synergistic mapping approach in five regional sites (Sweden, Poland, Borneo, Mexico, South Africa) for the epochs 2005, 2010 and 2015 and one global map for the year 2010. More on: [www.globbiomass.org](http://www.globbiomass.org)



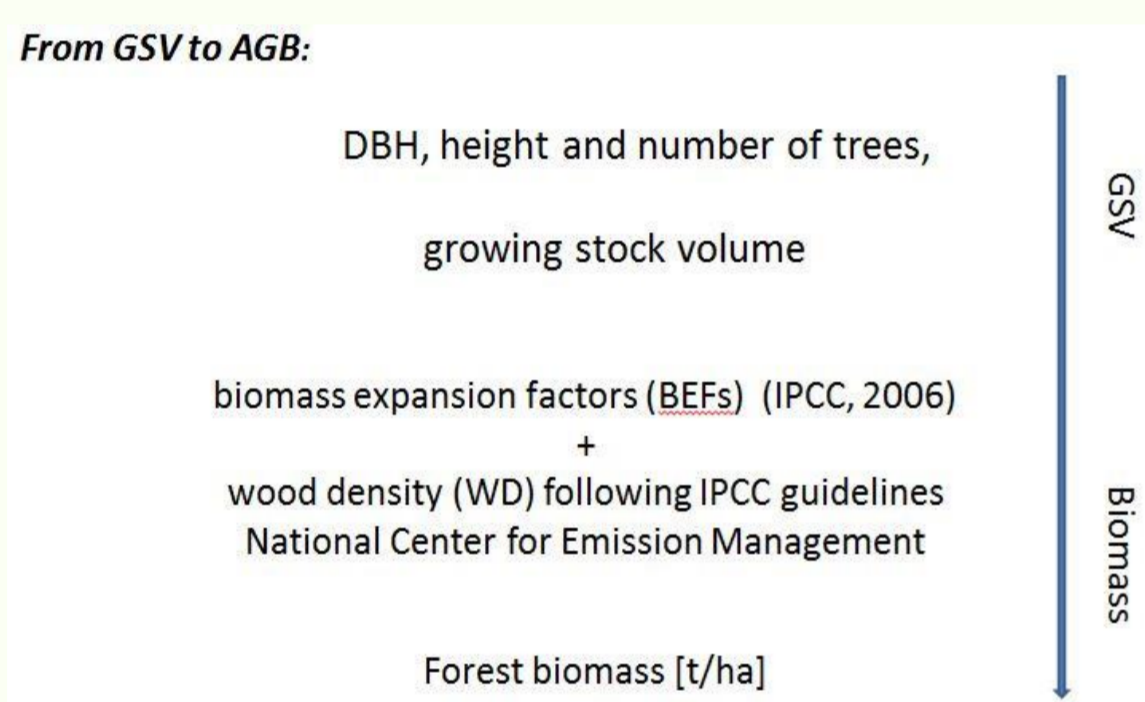
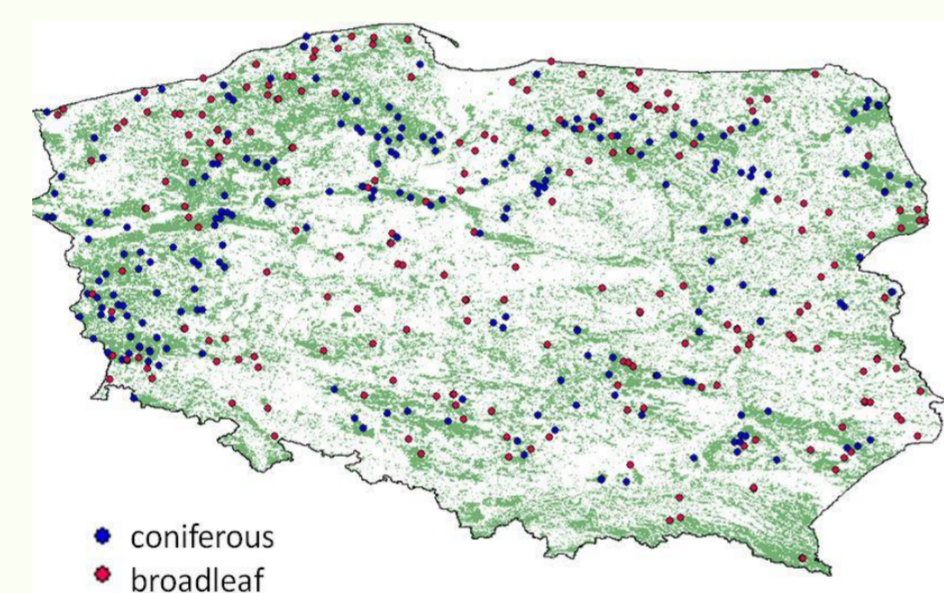
## REFERENCE DATA

### National Inventory of Forest Condition

- location of plots corresponds to ICP Forests Network
- Systematic 16x16 km grid – inside 25 L-shaped group of sampling plots consisting of 5 plots located 200 m apart
- Circular plot size ~0.05 ha (~11.28 m radius)
- Conversion GSV to AGB

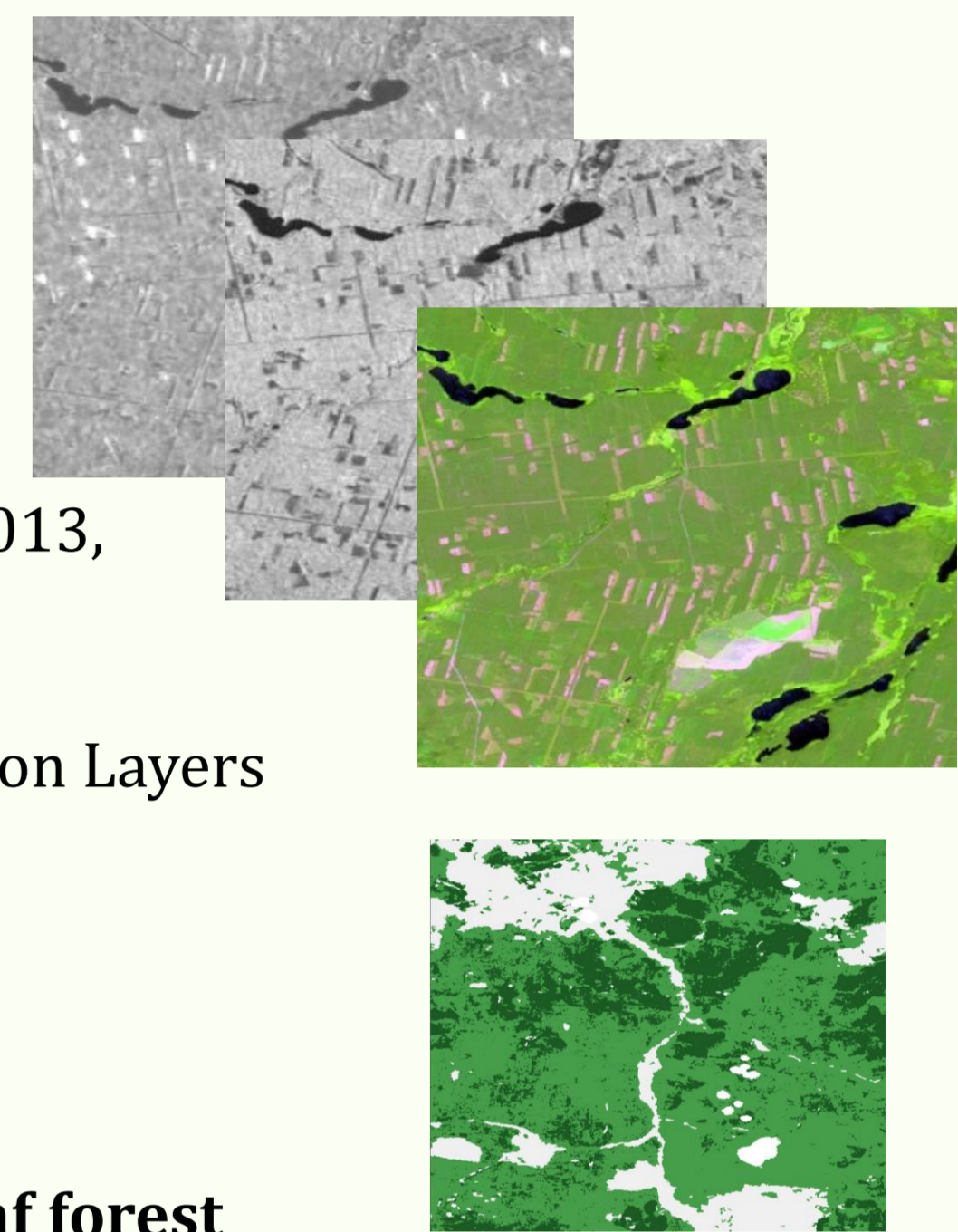


In Poland, forest covers almost 92000 km<sup>2</sup> (29,4 % of the country)



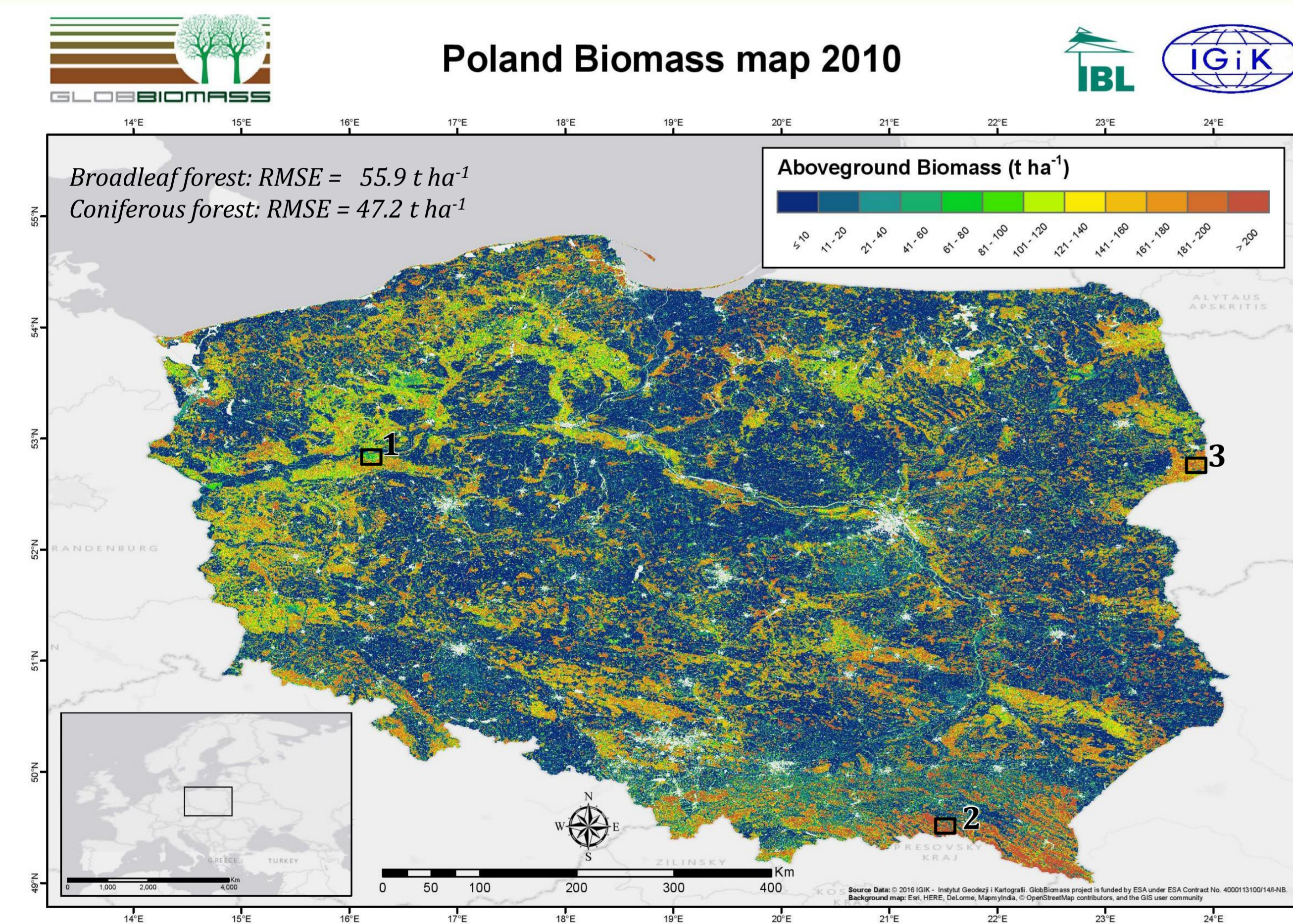
## REMOTE SENSED DATA

- ALOS PALSAR mosaic for 2009 & 2010**
  - 25 m spatial resolution
  - HH, HV polarisation
- Landsat 5/7 Surface Reflectance mosaic** (Hansen et al., 2013), Reference years 2010-2013,
  - 30 m spatial resolution, Bands 3,4,5 and 7
- Forest type map** – Copernicus High Resolution Layers
  - Reference year 2012
  - 20 m spatial resolution



## METHODOLOGY

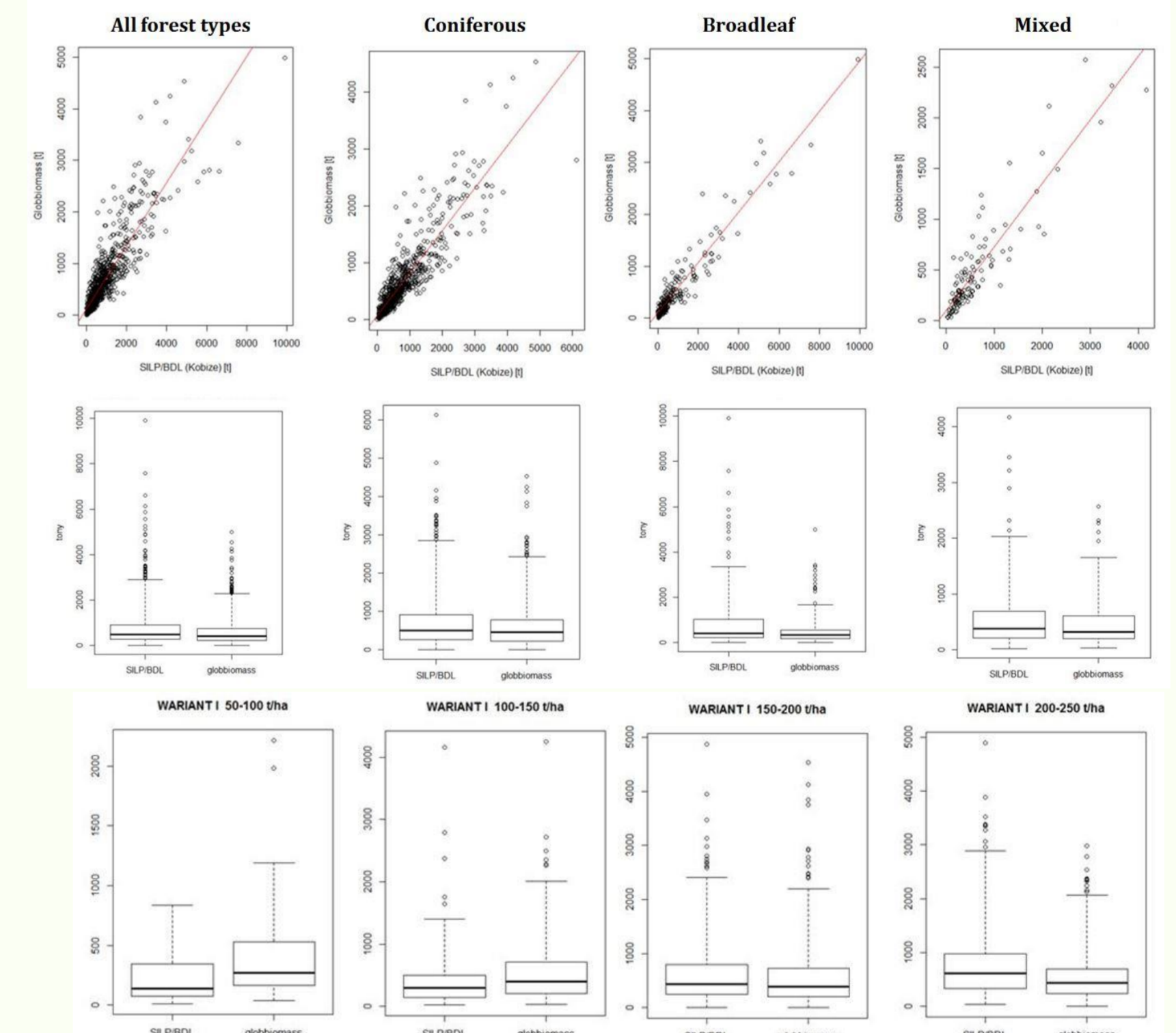
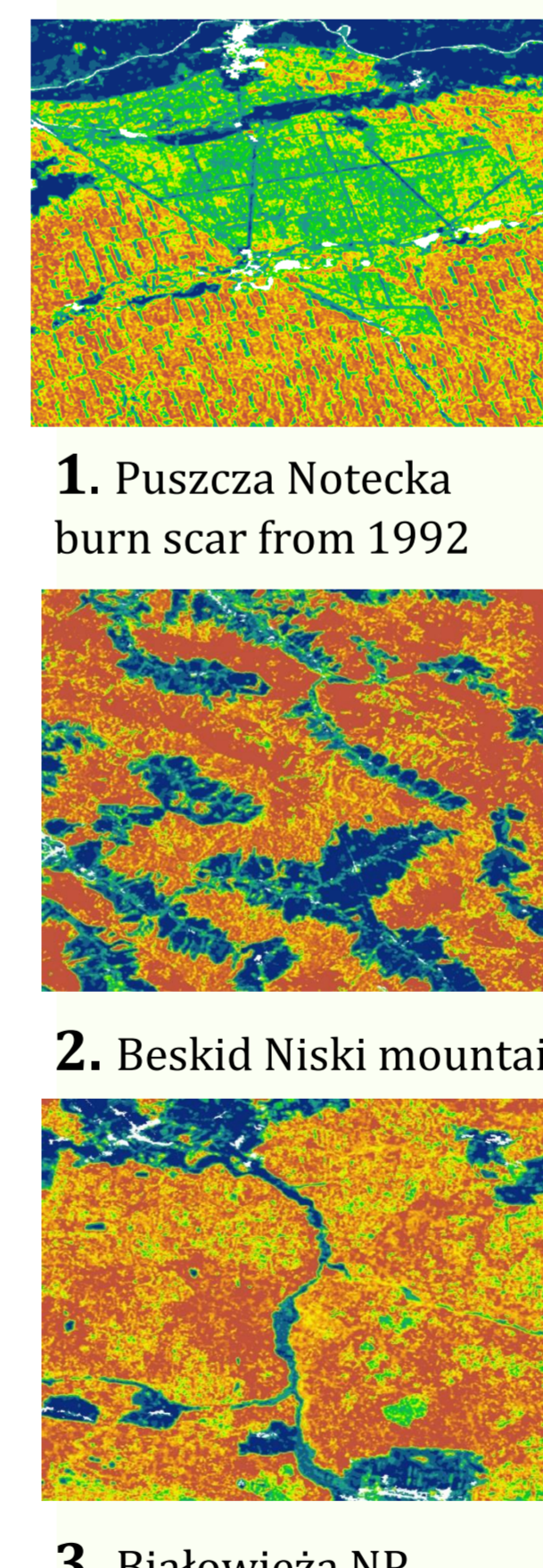
**Random Forest Regression**  
**Separate Model for coniferous and broadleaf forest**  
 Training (70% plots) & Accuracy assessment (30% plots)



## ACCURACY ASSESSMENT

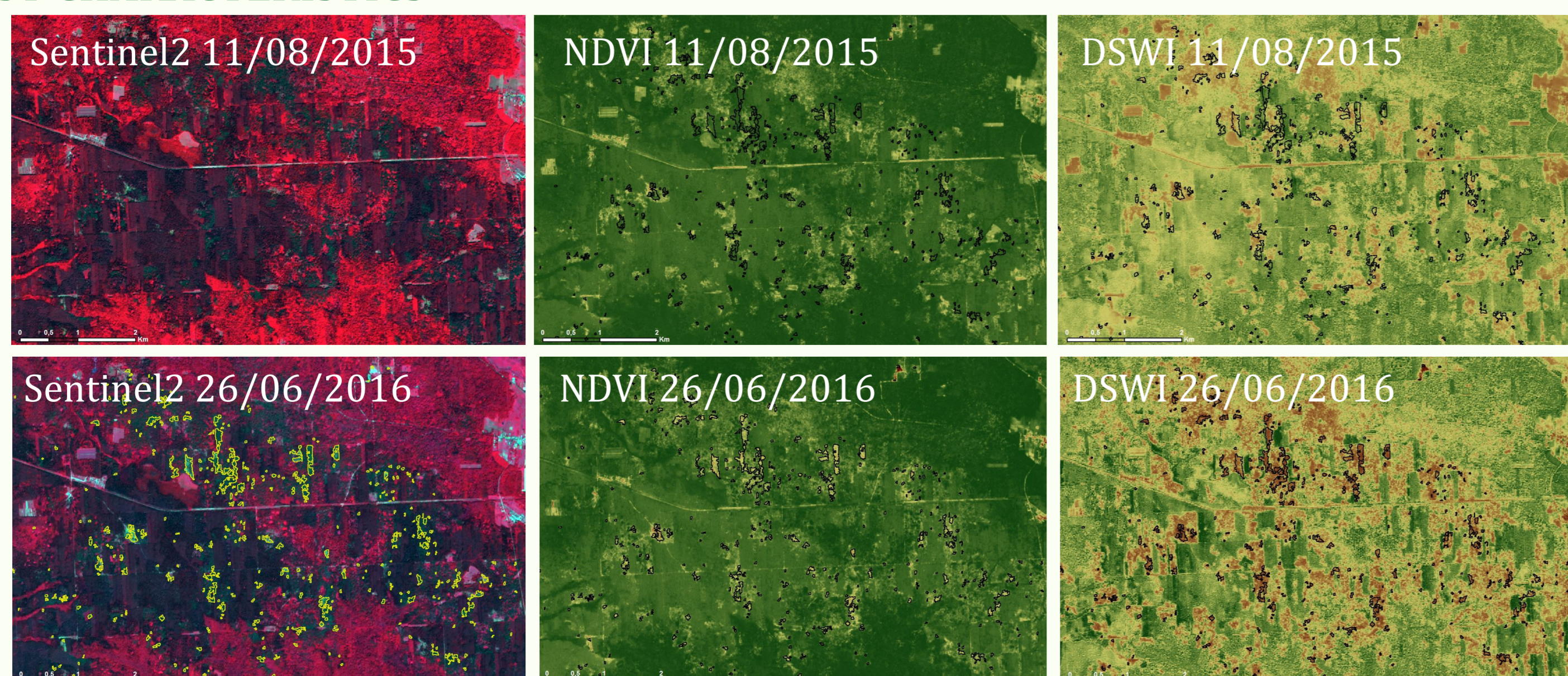
### Independent validation at forest stand level

Validation performed at 1146 stands: 743 coniferous, 236 broadleaf and 187 mixed forest, data collected in 2012



## FOREST CHARACTERISTICS

3. Białowieża National Park bark beetle outbreak



Normalized Difference Vegetation Index – NDVI  
 $NDVI = (NIR - RED) / (NIR + RED)$   
 characterizing general vegetation condition

Disease Water Stress Index – DSWI  
 $DSWI = (NIR - GREEN) / (SWIR1 + RED)$   
 sensitive to stress due to water shortage and plant damage

## ACKNOWLEDGEMENTS

The research has been conducted within the Polish-Norwegian Research Programme, Norway Grants, financed by the National Centre for Research and Development, as a part of the WICLAP project "Ecosystem stress from the combined effects of winter climate change and air pollution – how do the impacts differ between biomes?"



and within the GlobBiomass project funded by European Space Agency (ESA) under ESA Contract No. 4000113100/14/1-NB. Thanks to the State Forest National Forest Holding for providing Inventory data. Special thanks to the GlobBiomass consortium for recommendation and scientific advice. The random forest regression was run using the EnMAP-Box 2.2.

